

Md Concerto Hasse

Arr: Lars Forslund

Mandolin solo $\text{♩} = 32$

Mandolin 1

Mandolin 2

Altmandola

Altmandola

Tenormandola

Klassisk gitarr

Mandocello

Kontrabas

Cembalo

Mdn.solo

Mdn.1

Mdn.2

A. Mda.

A. Mda.

T. Mda.

Git.

Mncl.

Kb.

Hch.

5

tr

9

Mdn.solo

Mdn.1

Mdn.2

A. Mda.

A. Mda.

T. Mda.

Git.

Mncl.

Kb.

Hch.

13

Mdn.solo

Mdn.1

Mdn.2

A. Mda.

A. Mda.

T. Mda.

Git.

Mncl.

Kb.

Hch.

tr tr

$\text{♩} = 30$ $\text{♩} = 28$ $\text{♩} = 22$

Mandolin solo

Md Concerto Hasse

Arr: Lars Forslund

♩ = 32

3 3 3 3

3

5

7

10

12

14

♩ = 30
tr ♩ = 28 ♩ = 22

Mandolin 1

Md Concerto Hasse

Arr: Lars Forslund

♩ = 32

6

10

15

♩ = 30
tr

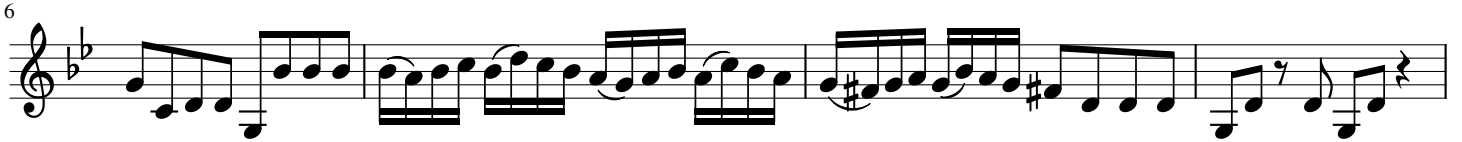
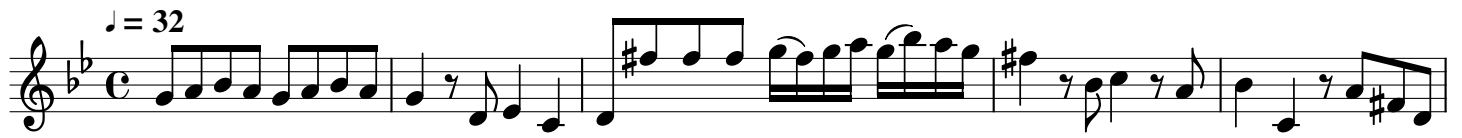
♩ = 28

♩ = 22

Mandolin 2

Md Concerto Hasse

Arr: Lars Forslund



Altmandola 1

Md Concerto Hasse

Arr: Lars Forslund

$\text{♩} = 32$
2

5

15

$\text{♩} = 30$ $\text{♩} = 28$ $\text{♩} = 22$

Altmandola 2

Md Concerto Hasse

Arr: Lars Forslund

♩ = 32
2

5

15

♩ = 30 ♩ = 28 ♩ = 22

Tenormandola

Md Concerto Hasse

Arr: Lars Forslund

♩ = 32

2

5

15

♩ = 30 ♩ = 28 ♩ = 22

♩ = 30 ♩ = 28 ♩ = 22

♩ = 32

2

5

14

♩ = 30 ♩ = 28 ♩ = 22

♩ = 30 ♩ = 28 ♩ = 22

Mandocello

Md Concerto Hasse

Arr: Lars Forslund

♩ = 32
2

5

15

♩ = 30 ♩ = 28 ♩ = 22

Kontrabas

Md Concerto Hasse

Arr: Lars Forslund

$\text{♩} = 32$
2 5

14

$\text{♩} = 30$ $\text{♩} = 28$ $\text{♩} = 22$

Cembalo

Md Concerto Hasse

Arr: Lars Forslund

♩ = 32

2 5

14

♩ = 30

♩ = 28

♩ = 22

14